

ELECTRICITY AND ENERGY

PV METERING/BILLING – NOVEMBER 2017

- 1. METERING/BILLING OVERVIEW**
- 2. CUSTOMER SPREAD IN TERMS OF TARIFFS**
- 3. APPROVED RANGE OF PV METERS**
- 4. PV METERING ARRANGEMENTS**
- 5. BILLING**
- 6. THE WAY FORWARD**

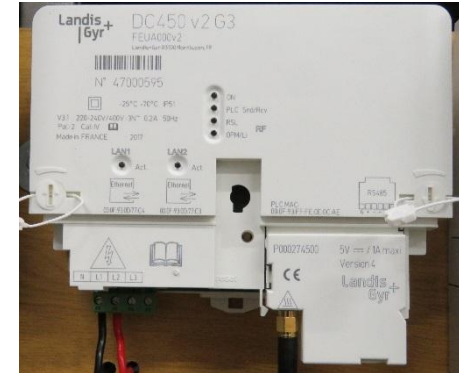
1. METERING/BILLING OVERVIEW

- Procurement, evaluation, installation and billing of PV metering
- Meters are programmed to record active and re-active half-hour load profile data
- Forward and reverse load profile energies are stored
- Meters are fitted with GPRS cell modems
- Data is uploaded via secure APN
- ecWIN system is set to upload meter profile data on a daily basis.
- Metering data, including usage invoice, tariff analysis, consumption patterns etc is made available to customers at no cost via the Silk Metering web site

2. PV Customer Spread in terms of Tariff

Tariff Description	Tariff Code	Count	Gen Total (kW)
Domestic IBT	31A Step	119	480.8
Domestic IBT	31A 3Ph	17	227
Domestic TOU	31A TOU	37	159.6
Commercial Flat	32A	15	67.8
Commercial Flat	33A	39	858.5
Industrial LV Demand	34A	6	550
Industrial MV Demand	35A	7	1829
	Totals:	240	4172.7

3. APPROVED RANGE OF PV METERS



Single Phase Meters (Elster AS230/220) Future Use (L&G E460s)



Three Phase Meters (Itron ACE600 & L&G E650)

4. PV METERING ARRANGEMENTS

<p>The Embedded Generator is not grid-tied. Reverse energy blocking equipment is installed and no energy shall be exported to the NMBM's Electricity distribution network.</p>	<p>No changes to existing metering is required</p>
<p>Energy from Embedded Generation to be used within a consumer's electricity network and excess to be exported to the NMBM's electricity distribution network.</p>	<p>Net Metering Provided by NMBM</p>
<p>Energy from Embedded Generation to be used within a consumer's premises and the excess wheeled to a third party via the NMBM's electricity distribution network.</p>	<p>Net Metering Provided by NMBM</p>
<p>Energy from Embedded Generation to be used solely for wheeling to a third party through the NMBM's electricity distribution network</p>	<p>Metering to be Provided by third party</p>

6. THE WAY FORWARD

- Embedded generation rules and tariffs currently in use by NMBM do not support a sustainable business model and need to be revised.
- Government need to finalise legislation to guide the way forward.
- NMBM need to level the playing field in terms of the various green energy schemes it currently supports

QUESTIONS